

NLM Catalyst Aluminas

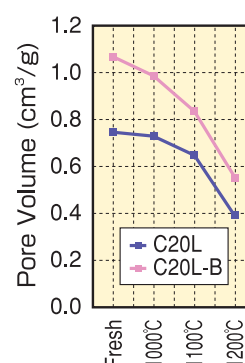
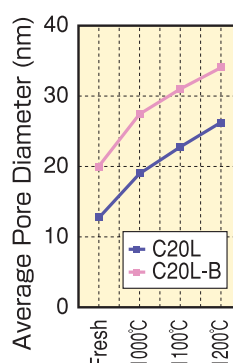
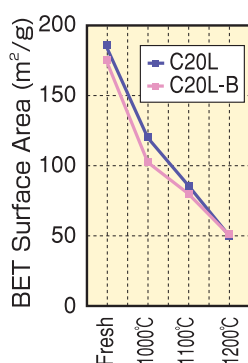
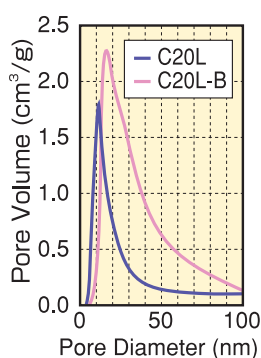
- NLM has long-experienced manufacturing capabilities for wide-range of alumina types.
- C10, pseudo-boehmite, and C20, γ -alumina, having high surface areas and controlled pore size distributions are basic products for the catalyst industries.
- C20L and C20L-B, La-doped γ -aluminas, are suitable for autocatalyst supports with good heat resistance at high temperatures. Other doped aluminas and mixed oxides can be prepared on specific customer requests.
- C40, θ -alumina, and C50, α -alumina, having sharp crystal size distributions are also used for polishing compounds and fillers.

Typical Properties

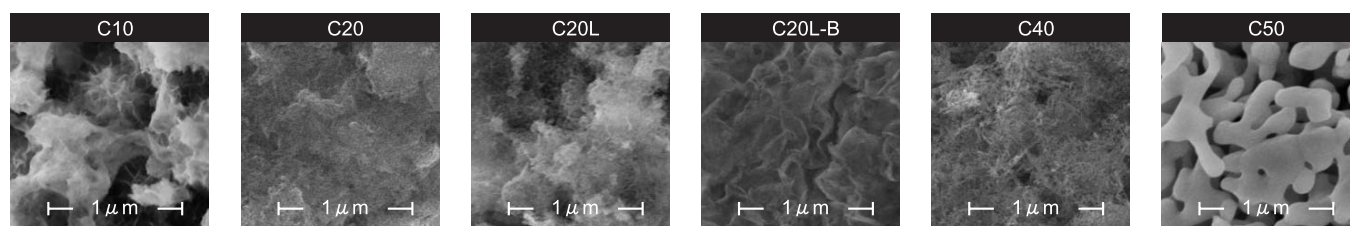
*1: Aged at 1000°C for 5 hrs. *2: Aged at 1100°C for 5 hrs.

Grade	C10	C20	C20L	C20L-B	C40	C50
Alumina Phase	Pseudo-boehmite	γ	γ		θ	α
Na ₂ O %	0.02	0.02	0.03		0.02	0.02
SiO ₂ %	0.03	0.04	0.04		0.04	0.04
Fe ₂ O ₃ %	0.01	0.01	0.01		0.01	0.01
La ₂ O ₃ %	-	-	4.0		-	-
H ₂ O+LOI %	27	5	4		2	1
Average Particle Size μ m	25	25	20-30	10	25	25
Average Pore Size nm	4.5	8.5	12.7	19.9	17.0	-
Pore Volume cm ³ /g	0.45	0.66	0.75	1.00	0.59	-
Fresh Surface Area m ² /g	270	240	190	170	100	7
Aged Surface Area ¹ m ² /g	-	105	120	100	87	-
Aged Surface Area ² m ² /g	-	60	90	80	62	-

Pore Size/Volume and Surface Area



Scanning Electron Micrographs (x 50,000)



Nippon Light Metal Co., Ltd., Chemicals Division

2-2-20 Higashi-Shinagawa, Shinagawa-ku, Tokyo 140-8628, Japan

TEL:81-3-5461-8151, Fax:81-3-5461-8186, <http://www.nikkeikin.co.jp/>

MEL Chemicals (UK)

TEL:44-161-911-1066, FAX:44-161-911-1090, <http://www.zrchem.com>

CreFu Crefu Limited (Korea)

TEL:82-2-716-3199, FAX:82-2-718-3199, E-mail: jcwoo@crefu.com